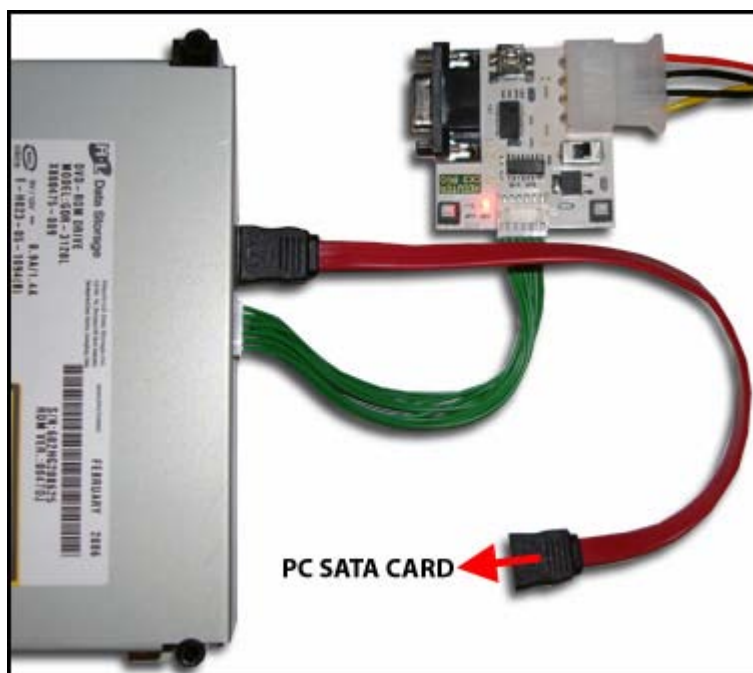


Tip



Before you fit the LT Switch we recommend that you make sure your PC SATA setup is working correctly. So connect the CK3 Pro to the DVD drive and connect the SATA cable to your SATA card/motherboard and check Jungle Flasher to see if there is any communication.

If all is well this is what it should look like:



I/O Port VIA ports Only

0x5F00 Include non-IDE Ports

Port Properties

I/O Address: 0x5F00

Type: SATA

Channel: Primary

Position: Master

Device: VIA RAID Controller - 3249

Drive Properties

Vendor: PLDS

Name: DG-16D2S

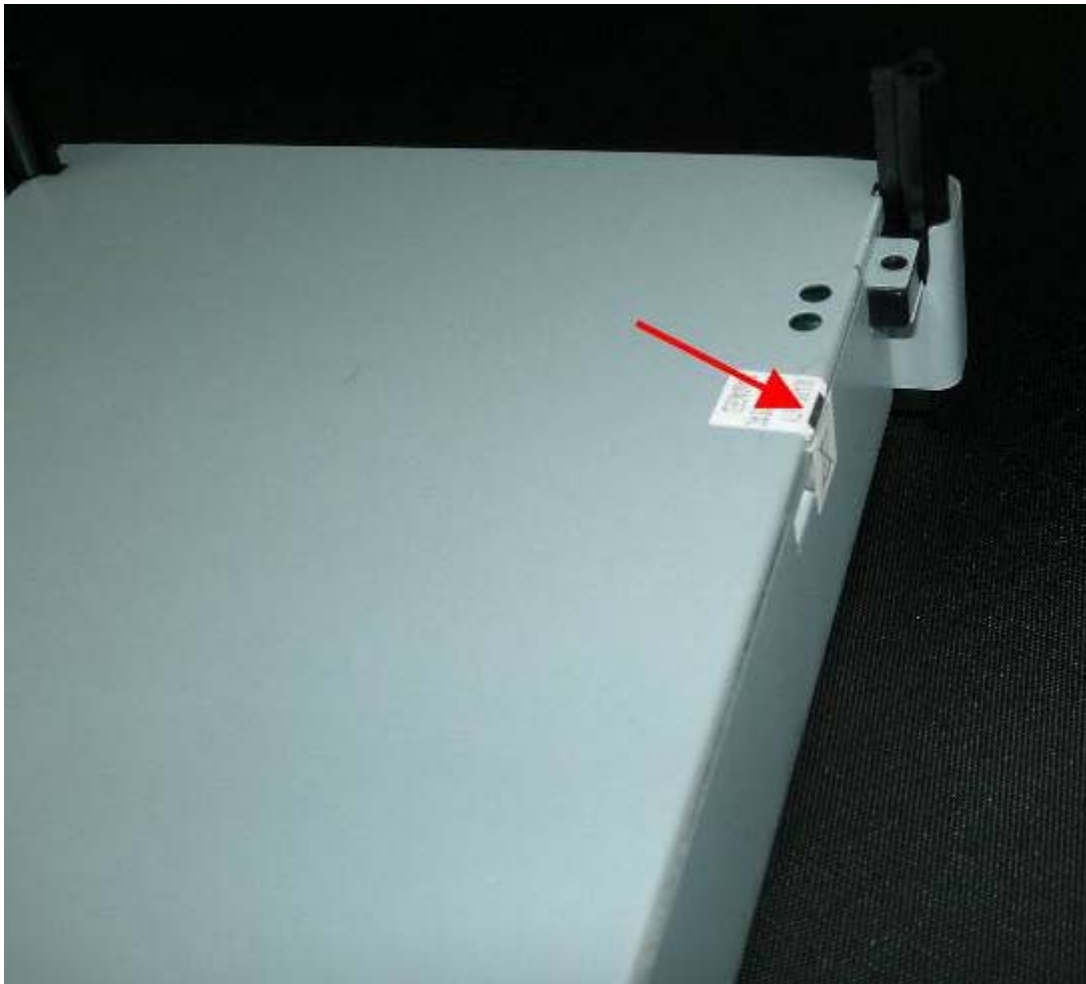
F/W Rev: 9345

Reserved: 0CA0A1D608CG83390701

1. OK now to fir the LT Switch. Remove the 4 screws



2. Cut the white sticker



3. Remove the bottom metal plate



3. Disconnect these 3 cables



4. Remove these 2 screws

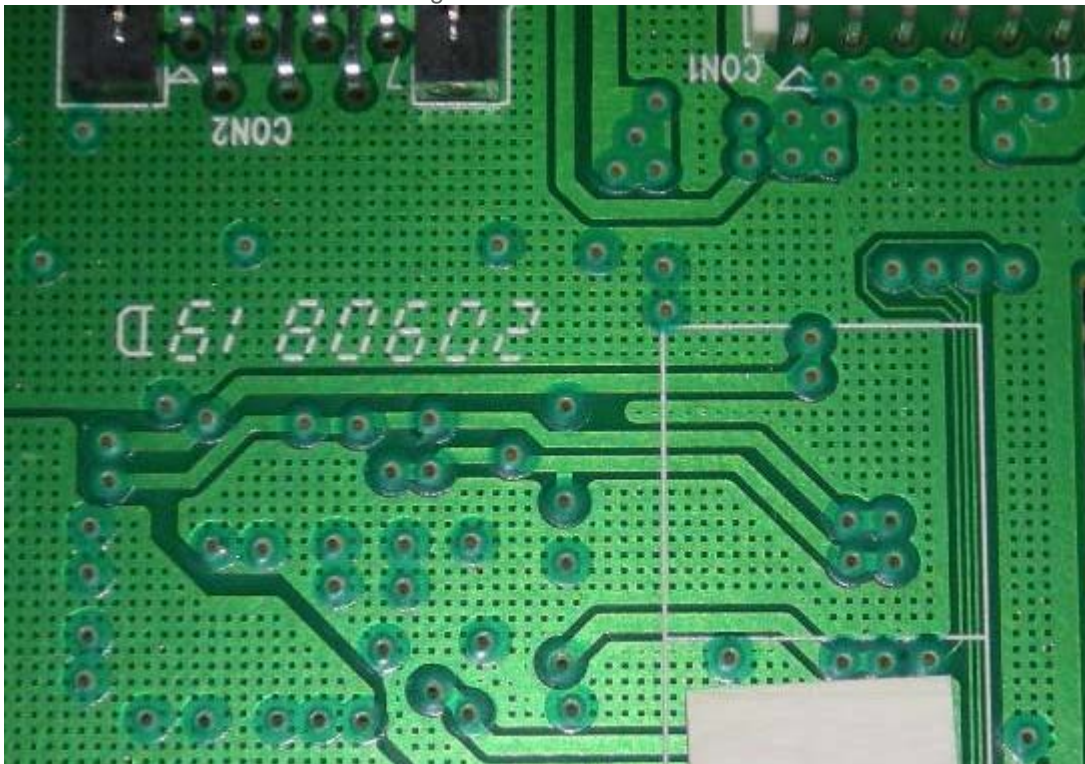


5. Push the plastic latch as shown and then unplug the DVD Control Board

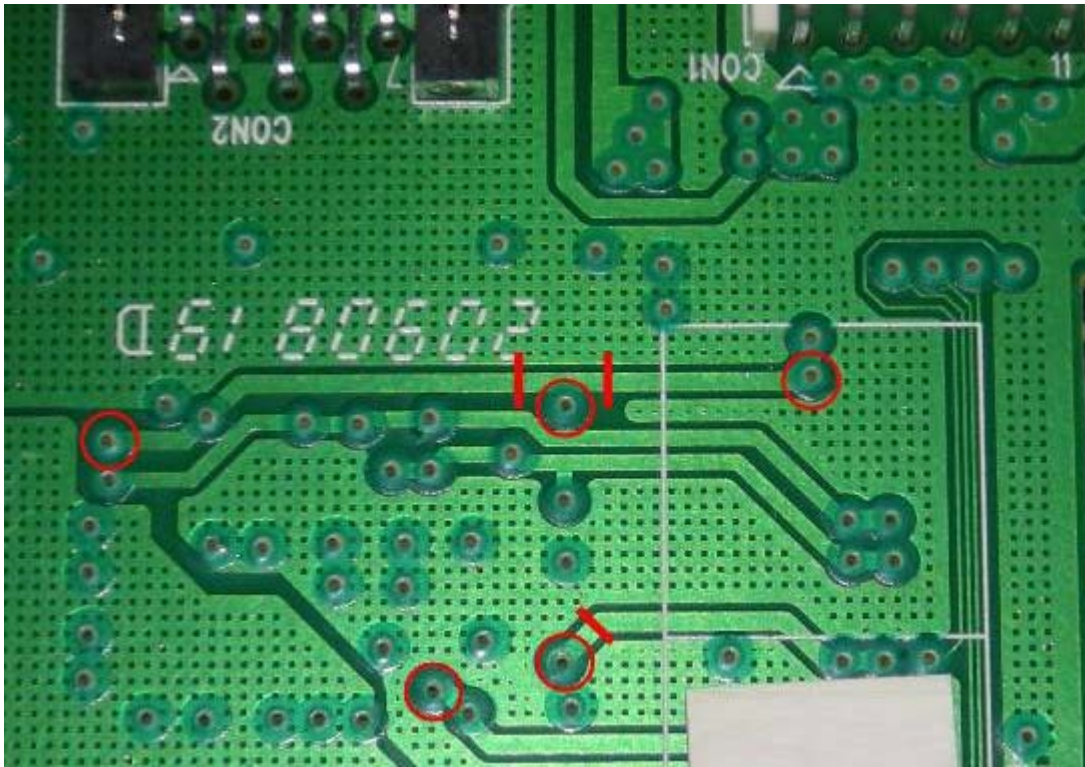




6. This is the area we will be working with



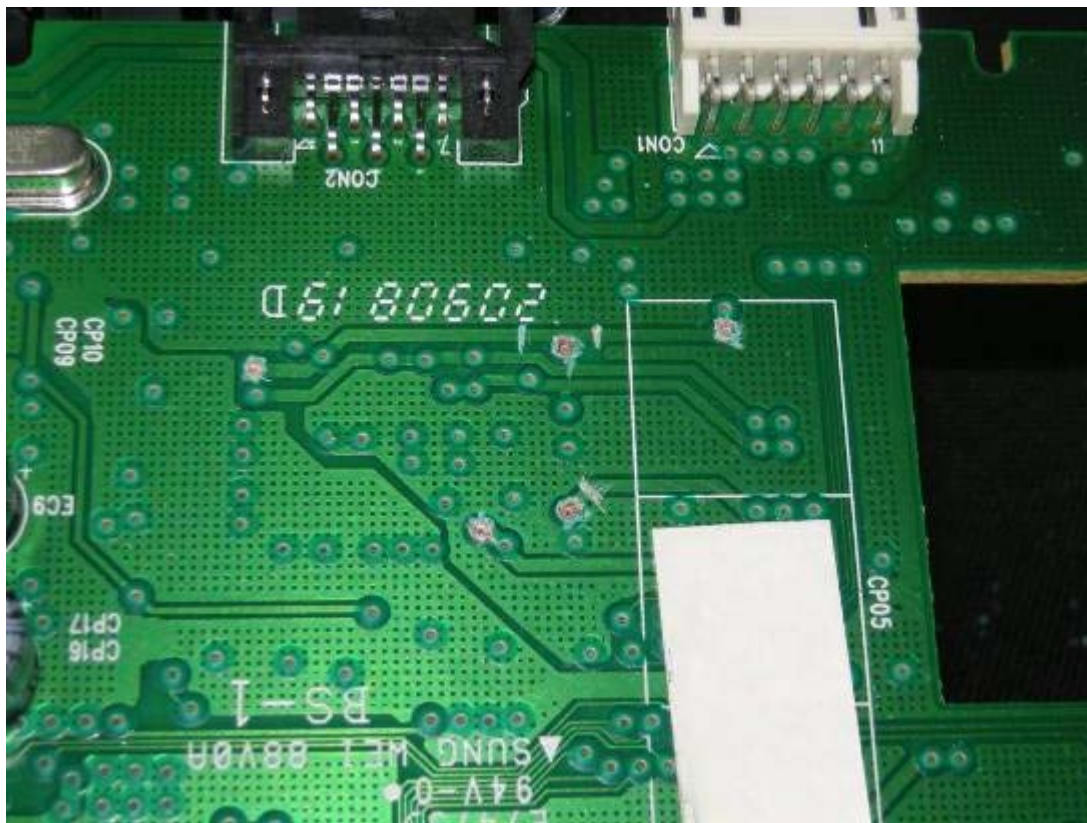
7. Use an [Xacto knife](#) and make 3 small cuts where the red lines are. Then we recommend you use a [fiberglass scratch pen](#) and clean up the 5 holes to make solder contact better. When making the cuts don't do just a thin line - cut out a slice of the track about 2mm wide to be sure of a correct cut. Cutting a trace uses 10% skills and 90% common sense.



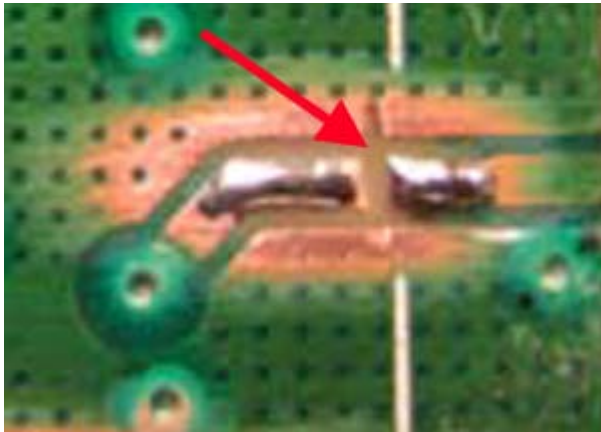
We recommend you do a continuity test with a multimeter to make sure your trace cuts are correct

1. Make sure there is no power to the DVD drive.
2. On your multimeter you will notice a bunch of different settings. You are going to want to set your tester to read ohms " Ω " or more commonly known as the Greek Omega symbol. If your multimeter features numerous settings under the ohms symbol, just set it to X1.
3. If you look at your tester when the probes are not touching anything, you should see a reading of infinity or OL. Touch the two probe tips together and you should see the reading change to zero. If your tester features an audio alert, it too will sound as you touch the probes together.
4. Now what you are going to want to do is touch one probe tip to one side of the trace and the other probe tip to the other side of the trace. If the trace is not cut correctly or "closed," the tester will read zero and you should hear the audio beep if it has that feature. If the trace is cut correctly or "open," the tester's reading will not change and there will be no audio beep if it has that feature

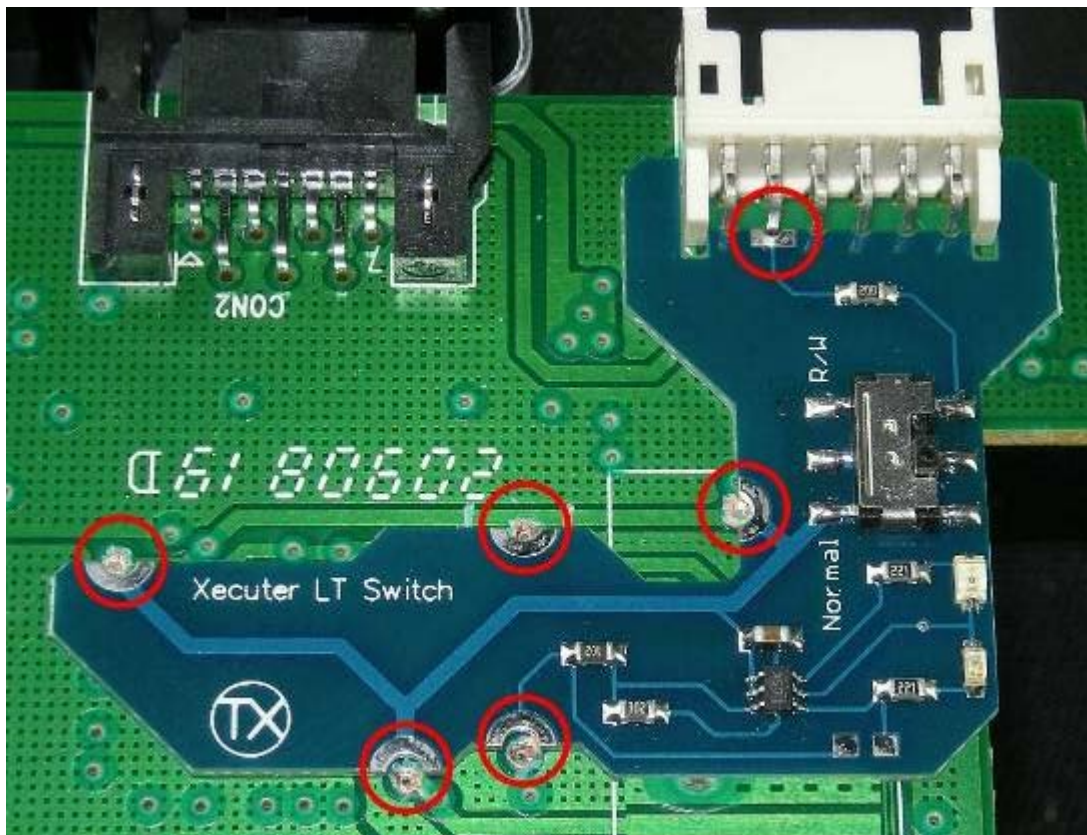
8. This is the board prepared. Its very simple and does not take long. Advanced fitters take about 30 seconds to do this. Some people take 5 minutes - some take longer.



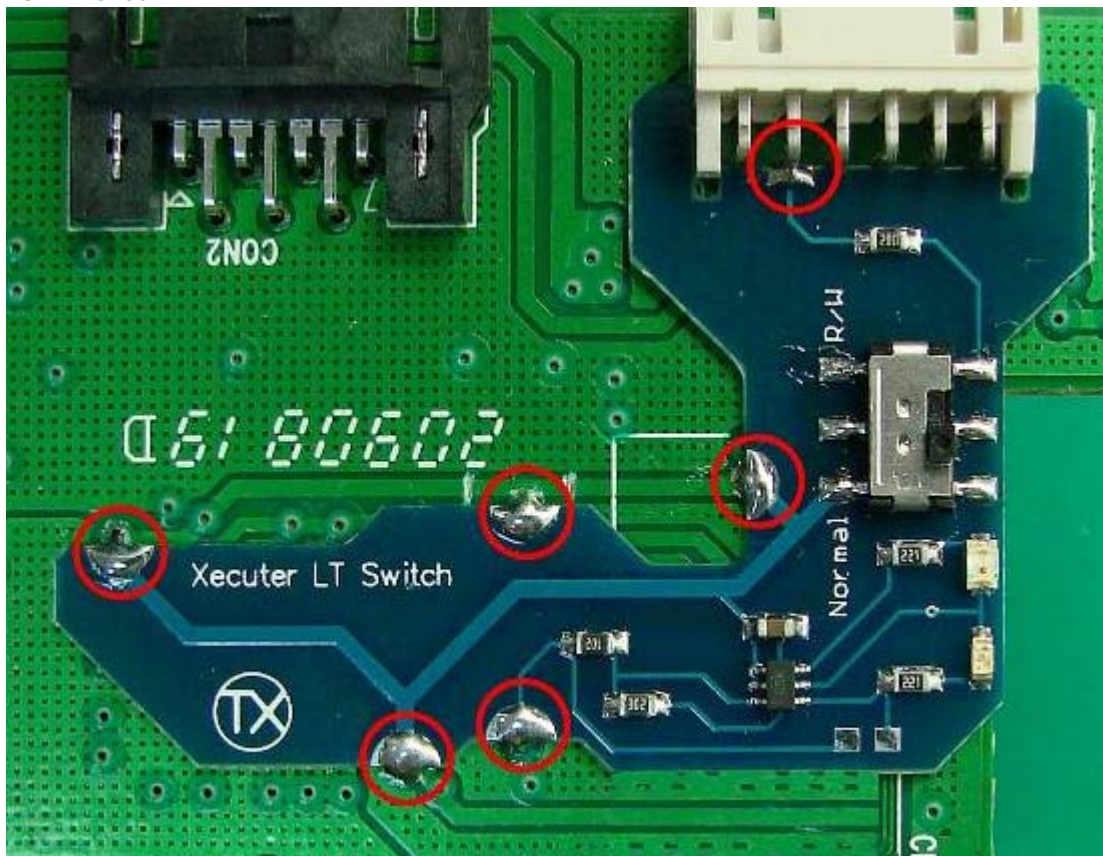
TRACE CUT CLOSE UP - THIS IS THE PERFECT TRACE CUT - VERY EASY !



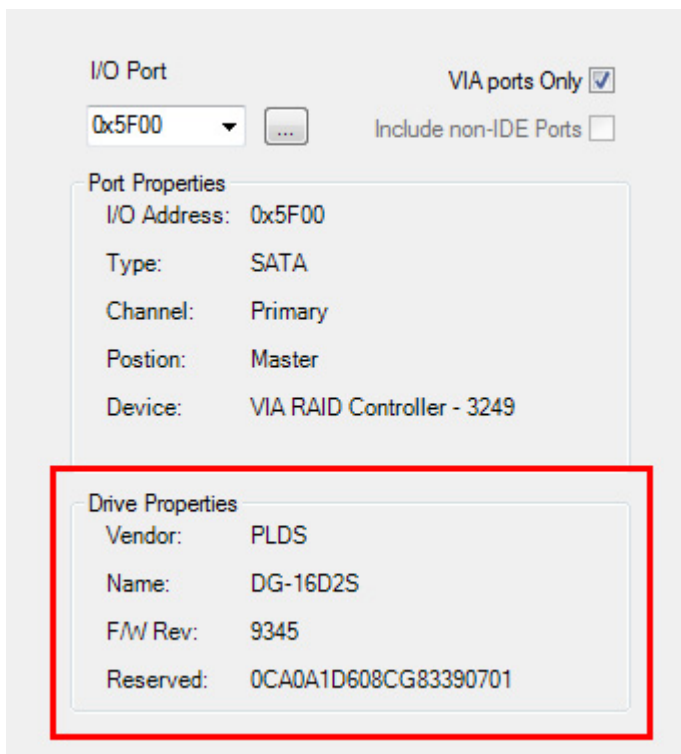
9. This is where you will install the Xecuter LT Switch. Simply solder the 6 points to the DVD Controller Board. Make sure you use flux to get a nice flowing connection. If you have to ask what flux is use Google or give it to someone else to do 😊



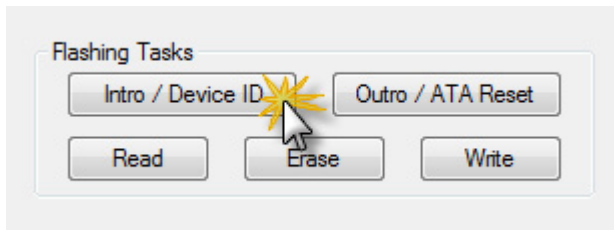
10. Finished !



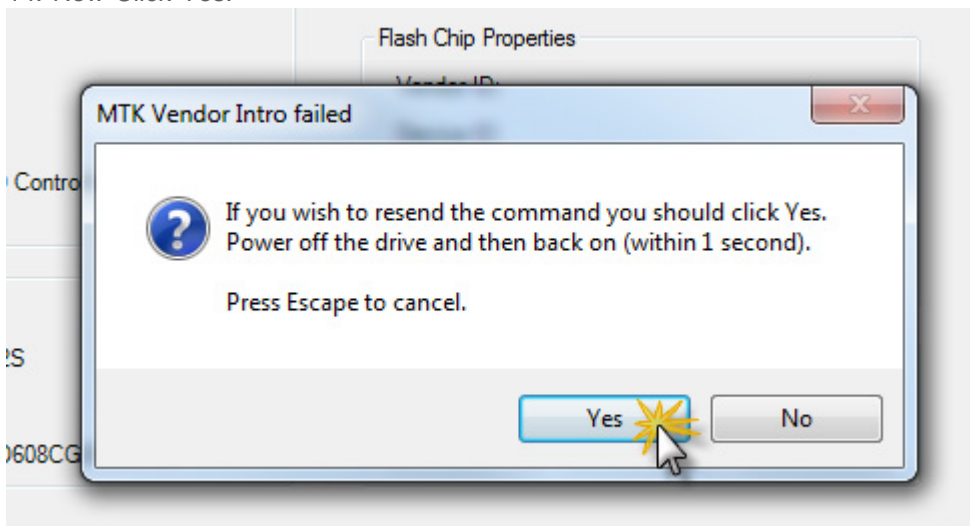
11. Now connect the DVD Controller board to a CK3 Lite or CK3 Pro. The CK3 Pro (Rev D) is the latest version at time of press. Move the switch to the NORMAL position. The LED will light up green.



13. Press the Intro/Device ID Button.

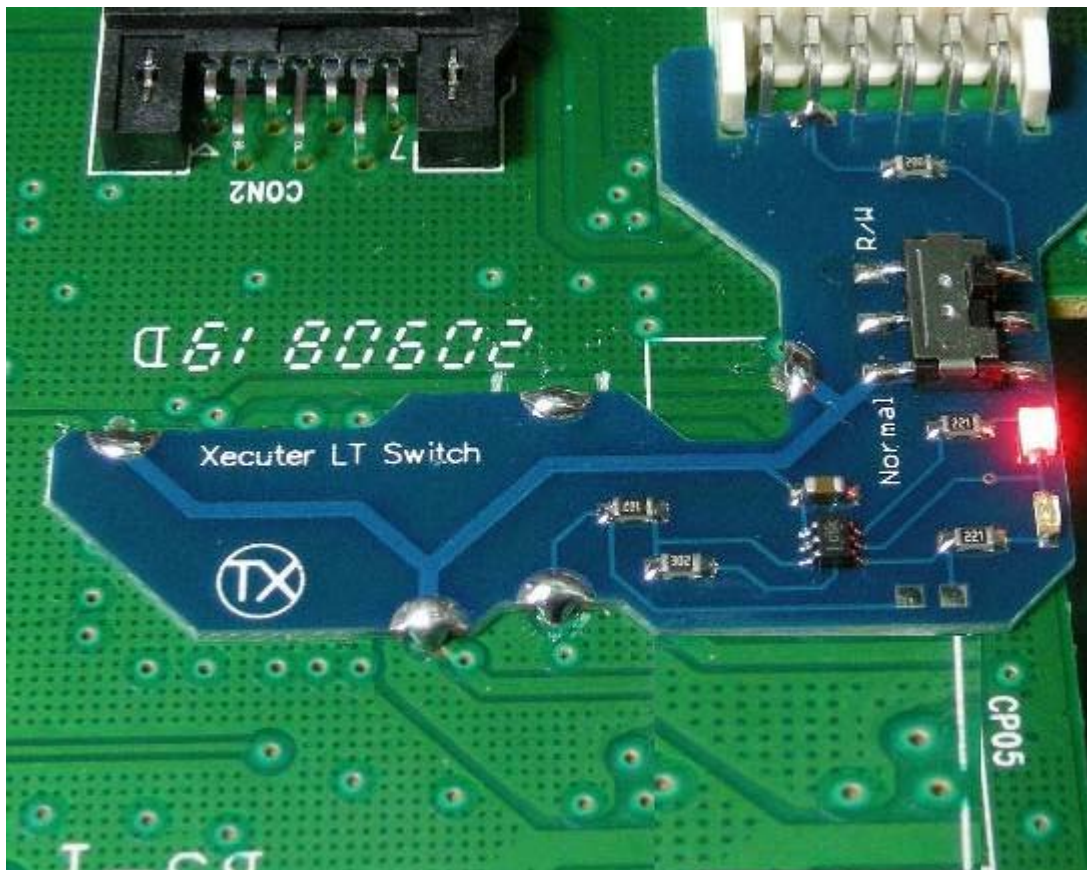


14. Now Click Yes.

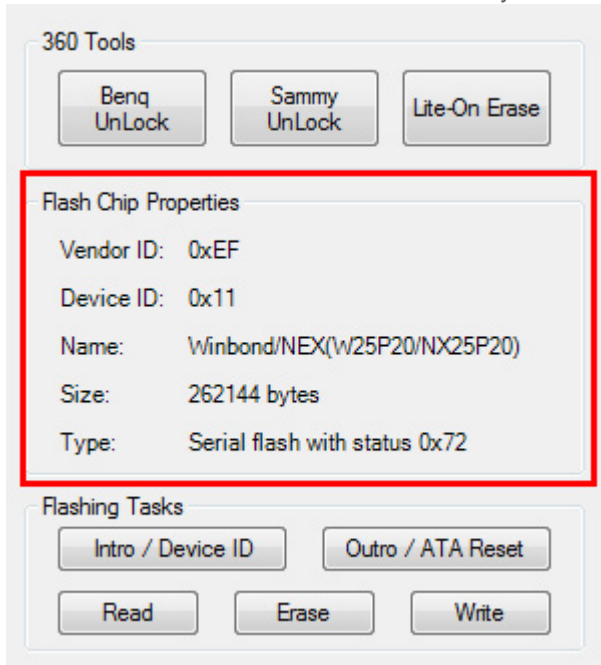


15. Don't be slow when doing this. if it doesn't work the first time simply try again. It's all in the timing. Turn the power OFF on the CK3. Move the Lt Switch to the R/W position. Turn the CK3 Pro ON. The Led should be RED.

(Some users report that Turning OFF CK3 - Switch to R/W - Turn ON CK3 - Turn OFF CK3 - Turn ON CK3 switches to vendor mode more successfully)



15. You should now get Status 0x72 and you are in vendor mode. As soon as you see the flash chip properties switch the LT Switch to Normal right away (Green LED). You can now full dump your Liteon firmware and program as normal 😊 if you don't get 0x72 then simply retrace your steps and try again. We have done this process many dozens of times and our testers have now done hundreds of consoles. When done correctly it works every time.



Naturally when you are done you can put everything back together. Just leave the switch in normal mode it won't ever be needed again - even if you need to update your firmware again in future you can simply connect direct to Jungle Flasher and erase the fw and re-program - you do not need to manually switch again (thats right NEVER again - so no need to buy other more expensive products that have a "Feature" that you don't need to open up your drive again to flash when doing upgrades - WE KNOW ! lol 😊)

NOTE: This switch is a one time install. If you are an installer we make it very low-cost for you to buy these switches. If you insist on removing and re-using this switch then you WILL probably

damage your DVD drive.

TROUBLESHOOTING:

DO NOT QUESTION THAT THERE IS SOMETHING ELSE WRONG IF YOU GET THESE SYMPTOMS. IF YOU ARE NOT GETTING 0x72 THEN YOU HAVE BAD SOLDERING OR BAD CUTS - THAT'S IT NOTHING ELSE. PLEASE DON'T LET US REPEAT THIS OVER AND OVER IF YOU HAVE A PROBLEM - ITS BEEN PROVED A HUNDRED TIMES + THAT EVERY ISSUES IS DOWN TO A BAD INSTALL.

Not getting any LED: BAD SOLDER

LED not switching from green to red: BAD TRACE CUTS

LED shows only RED: BAD SOLDER OR BAD TRACE CUTS

LT SWITCH v1 Not Getting 0x72: BAD SOLDER OR BAD TRACE CUTS (IN SOME 93450 CASES YOU WOULD NEED 18OHMS RESISTOR - IF YOUR SOLDER JOB WAS A BIT UNTIDY - YOU WOULD NEED AN LT SWITCH v1.5)

LT SWITCH v1.5 Not Getting 0x72: MOVE MULTI-R TO 18 or 22. IF STILL NO THEN BAD SOLDER OR BAD TRACE CUTS

Sometimes works - Sometimes Doesn't. You have a poor solder joint. Obviously 😊