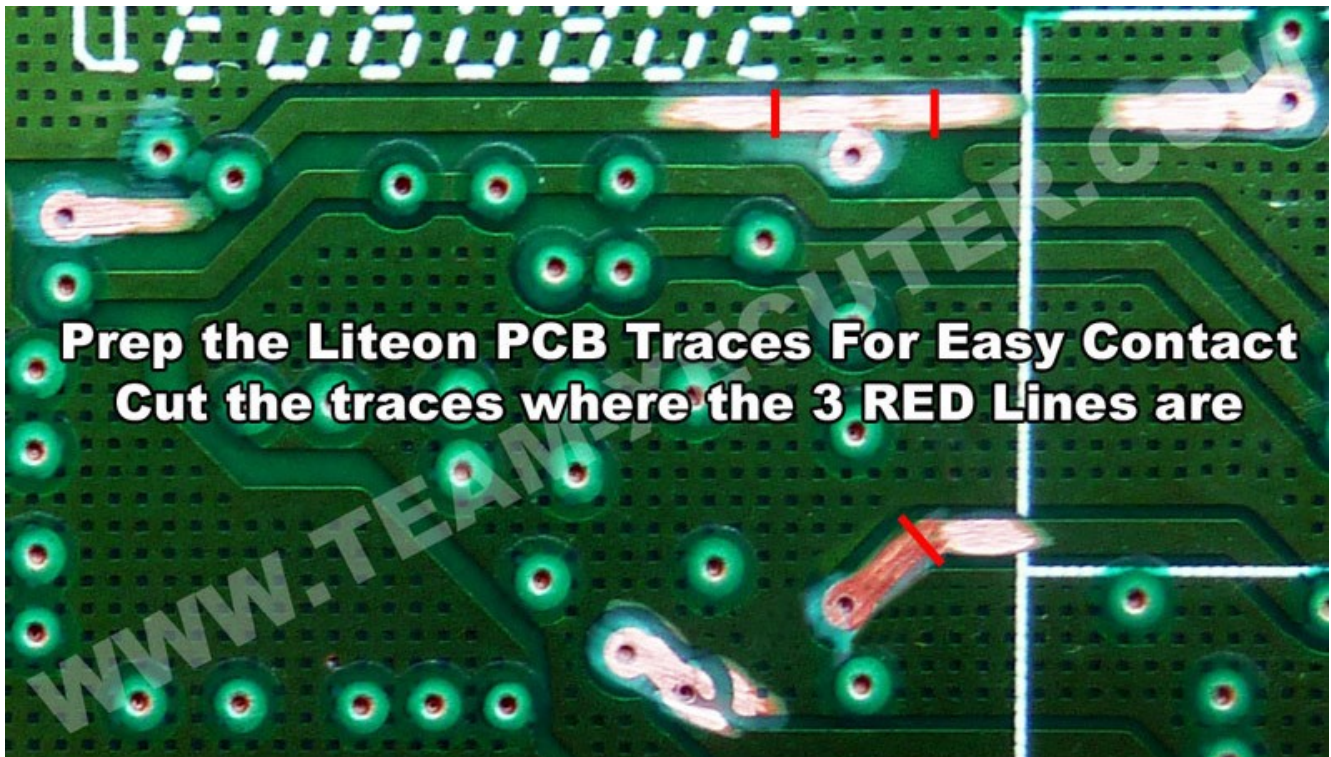


LT CLIP & LT Switch v2 Installation

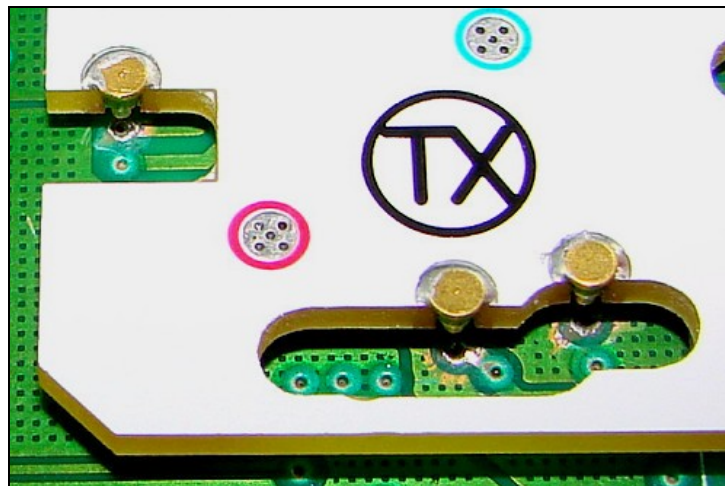
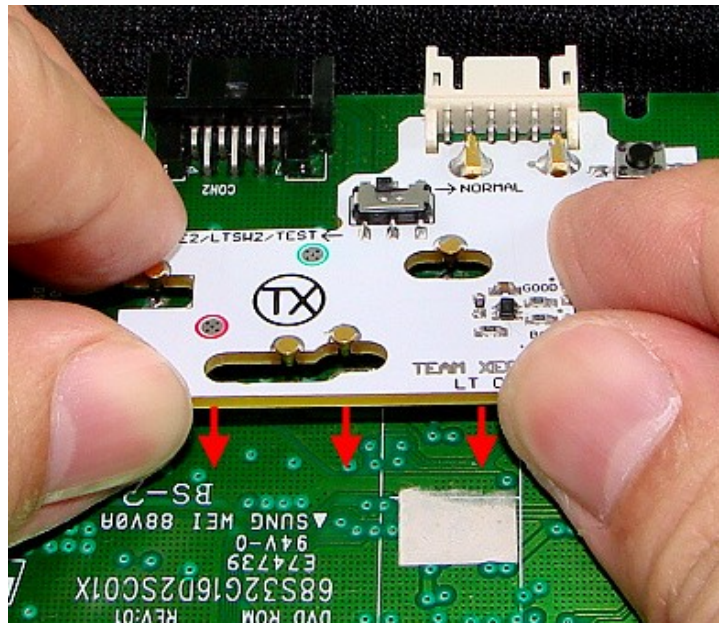
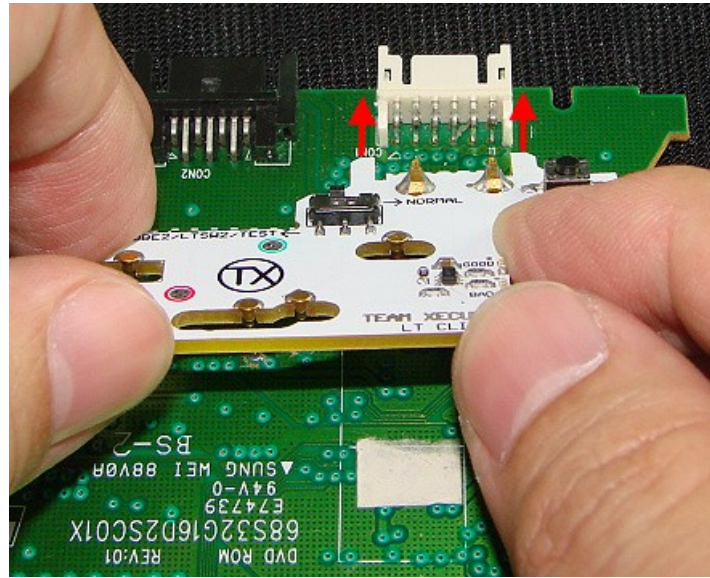
1. Disassemble the Liteon DVD and disconnect the PCB (2 screws as shown below).



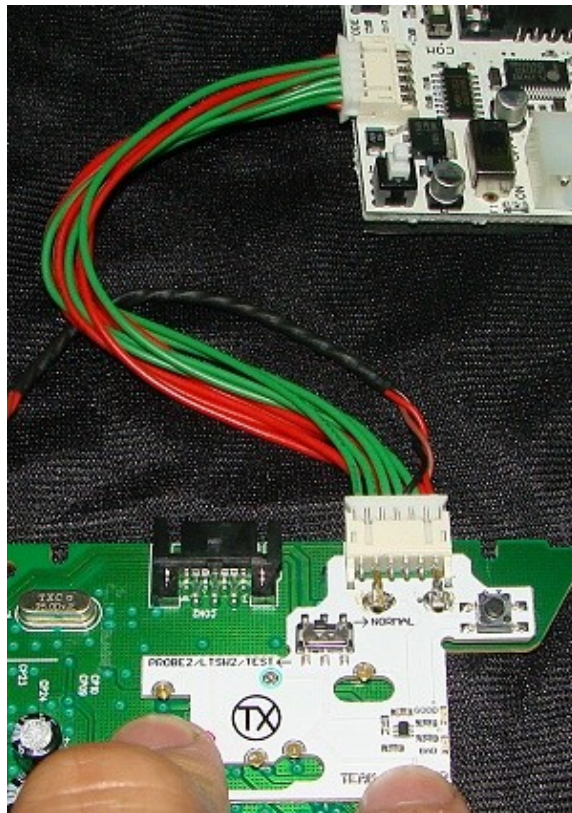
2. Flip the PCB over. Now prepare the PCB traces for easy contact and cutting. This is easily done with a fiberglass scratch pen to clean away the green varnish – exposing the copper trace. Make 3 trace cuts as shown by the red lines in the image below.



- Now we are going to test the trace cuts. Do not remove the sticky paper from the back of the Lt Clip just yet. Mount the LT CLIP in it's correct location as shown below. While testing you can simply hold the LT Clip in place.

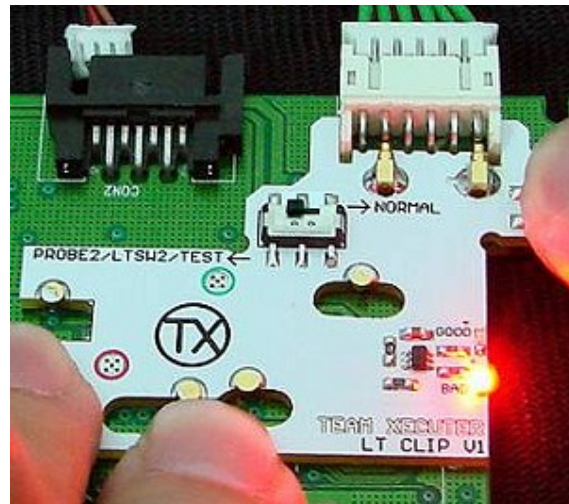
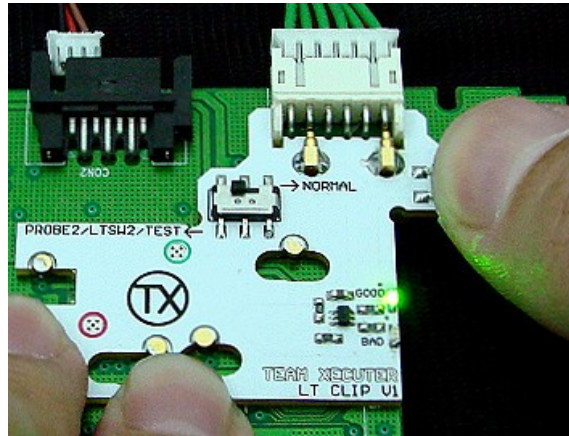


4. Connect a CK3 Pro or CK3 Lite as DVD power with the Lt Switch v2 cable. **Caution: the 3pin wire side of cable has to be connected to the DVD PCB. DO NOT connect the LT SW V2 EXT PCB at this stage..**

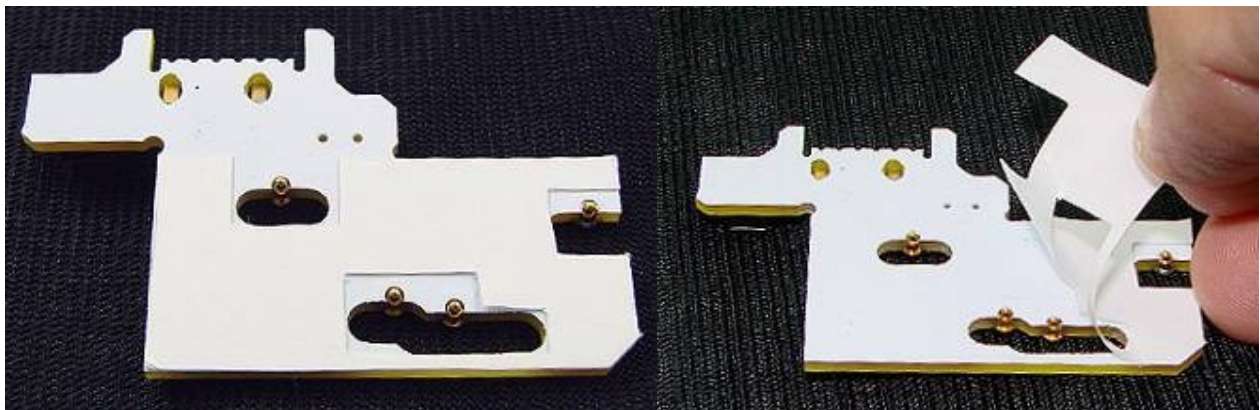


5. Switch the LT CLIP PCB switch to the **LEFT (Probe 2/LTSW V2/TEST)**. There is no need to touch this switch from now on.

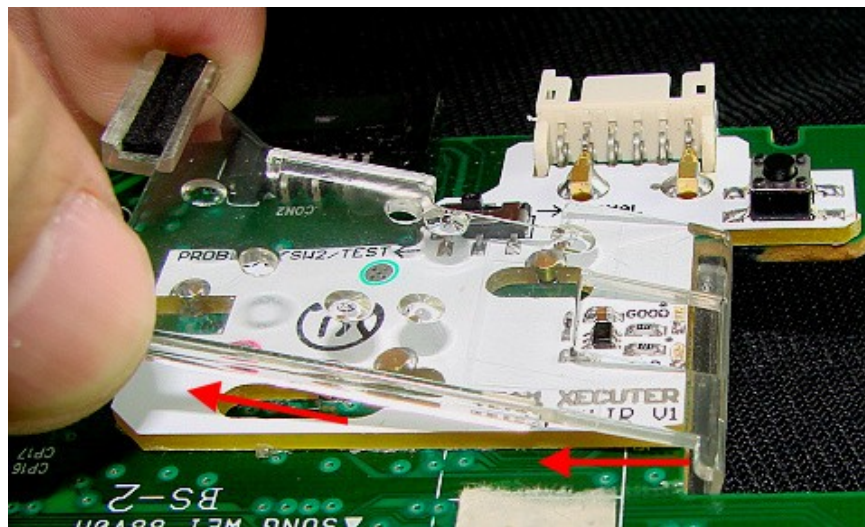
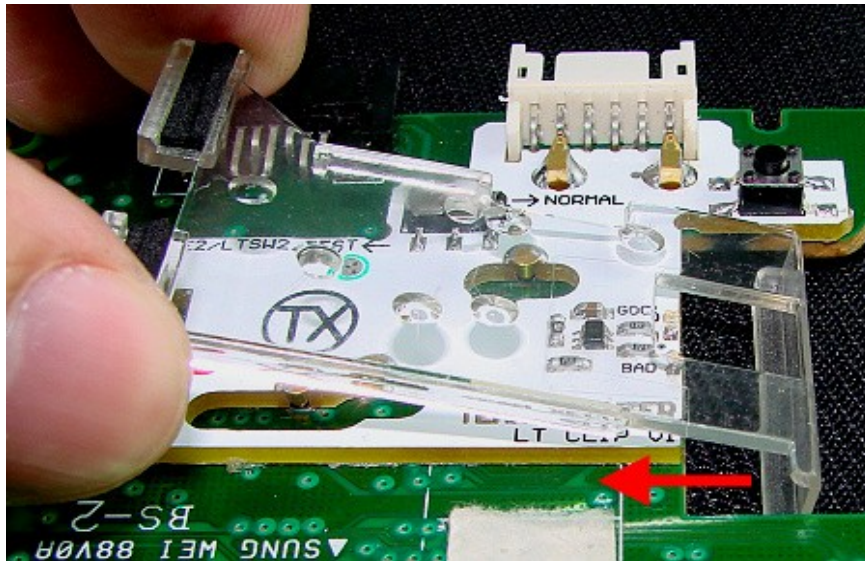
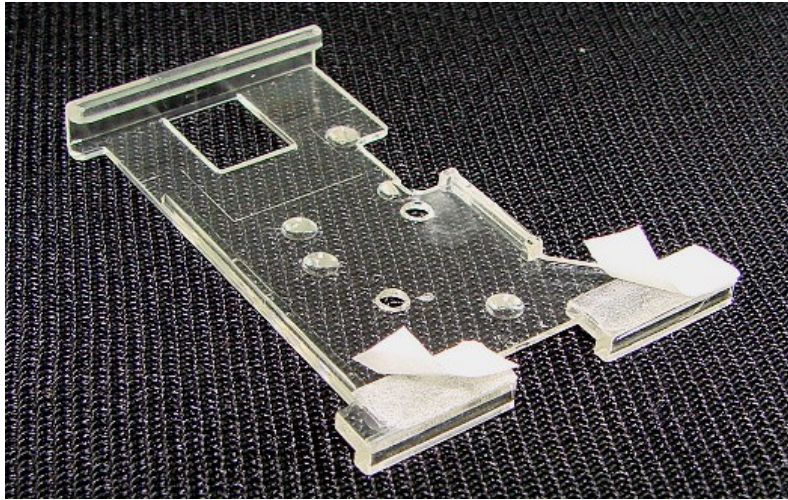
6. Power on the CK3 Pro / CK3 Lite, then press the tack switch to test your trace cuts.
(Green: Good Cuts, Red: Bad Cuts)

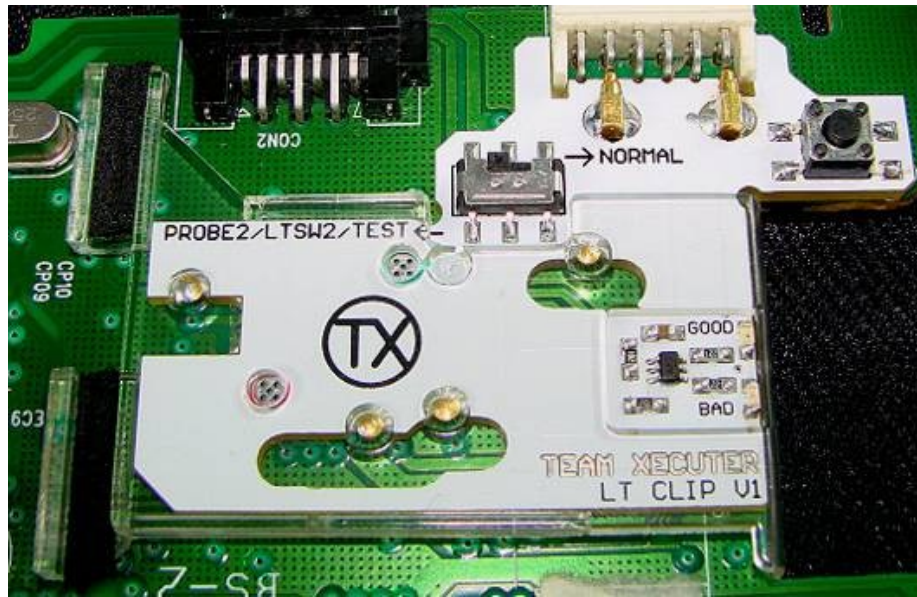
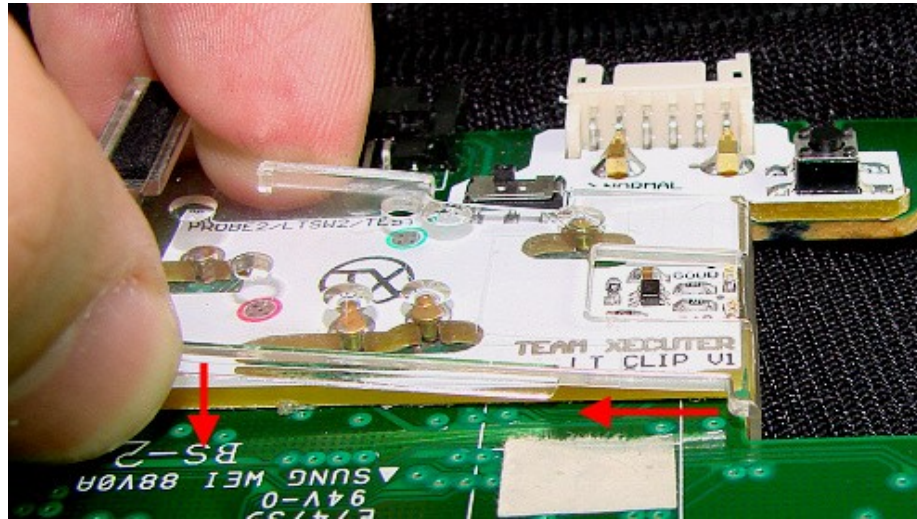


7. If you get green, then you can power off CK3 Pro / CK3 Lite and go on to the next step, if you got red, then power off the CK3 Pro / CK3 Lite and re-check the trace cuts and test it again.
8. Power off the CK3 Pro / CK3 lite, remove the LT CLIP PCB from the Liteon DVD and remove the sticker on the back side of the LT CLIP PCB, and then reinstall firmly to the Liteon PCB as before. You should check the trace cuts again, you should still get green.



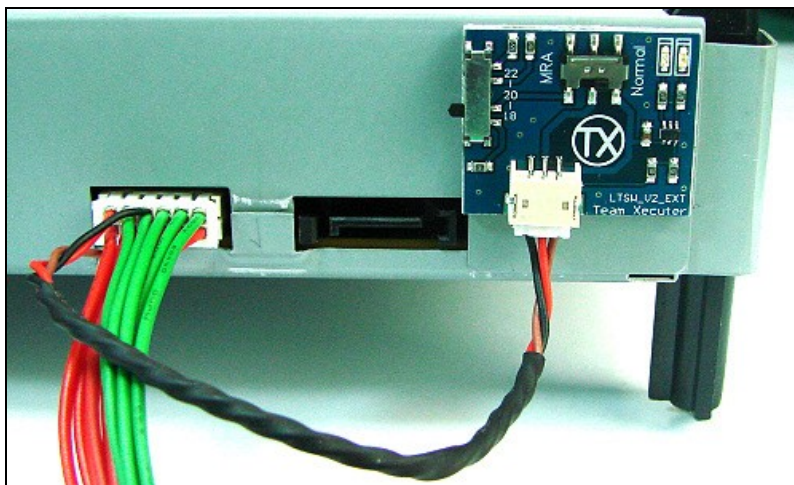
9. Remove the 2 small stickers on back side of the LT CLIP, and install the LT Clip to the LT Clip PCB as instructed below.



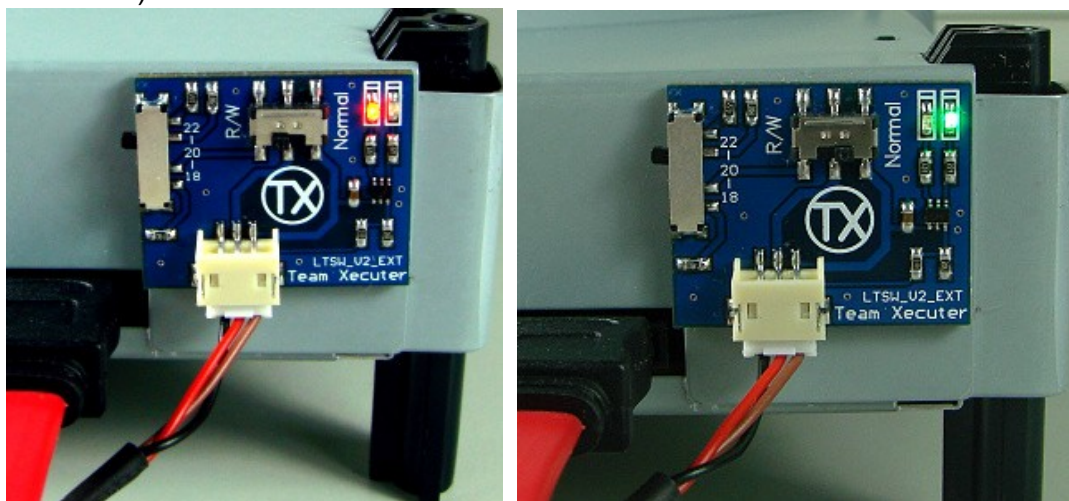


10. Screw the Liteon DVD PCB back into the case. Note that you should take care to make sure this is done correctly and firmly as the DVD case will make sure the LT Clip stays in place.

11. Connect LT SW V2 EXT board and set the switch of LT SW V2 EXT board to MRA. Default Multi-R switch should be set to 20. Only try 18 or 22 if you have trouble with getting into Vendor mode – however this is very rare.



12. Run Jungle Flasher to Read / Write the Firmware (Vendor Mode is done by switching from MRA to Normal)



13. Switch the switch of LT SW V2 EXT board to **Normal**, then unplug power cable from the CK3 Pro / CK3 Lite, and plug it to the XB360 motherboard. The LT SW V2 EXT LED should be green, **there is no need to remove the LT SW V2 EXT PCB**

